

MEN PULL OVER HOODIES
PULL OVER HOODIE

The sweat pull over hoodie

Regular fit

Mens style with an regular fit,
 for a oversized look you may prefer sizing down.

Combination options



Hoodie

Woman Hoodie



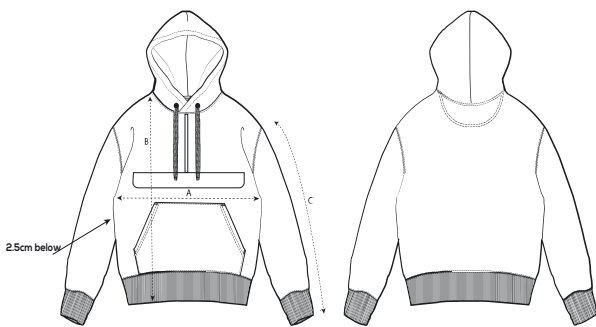
COLOURS



Shell : 65% Cotton 35% Polyester, Brushed Fleece, 300 gsm

Wash Instructions

Wash similar colours together, no ironing on print, wash and iron inside out.



SIZES IN CM		S	M	L	XL	XXL	3XL
A	Half Chest	57	60	63	66	69	73,5
B	Body Length	69	73	75	77	79	81
C	Sleeve Length	59,6	60	60,5	61	61,5	62

